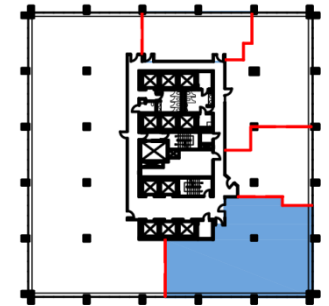
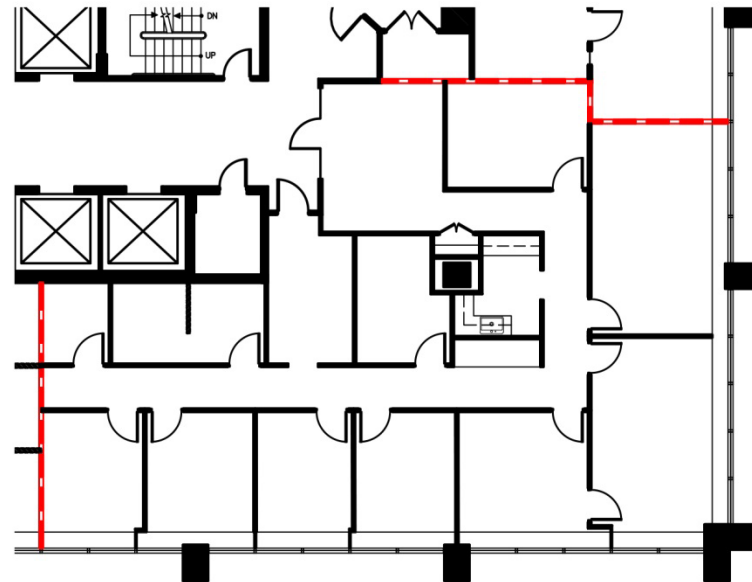


ONE GATEWAY



SUITE 210

3,452 RSF



2nd Floor Key Plan
(occupied)



COLLIERS INTERNATIONAL
300 Interpace Parkway | Bldg. C, 3rd Floor
Parsippany, NJ 07054
www.colliers.com

Bryn Cinque
+1 973 299 3016
Bryn.Cinque@colliers.com

James Bailey
+1 973 299 3013
James.Bailey@colliers.com

Managed by
ADVANCE
REALTY