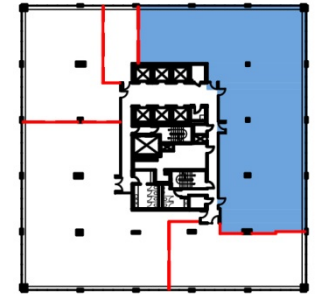
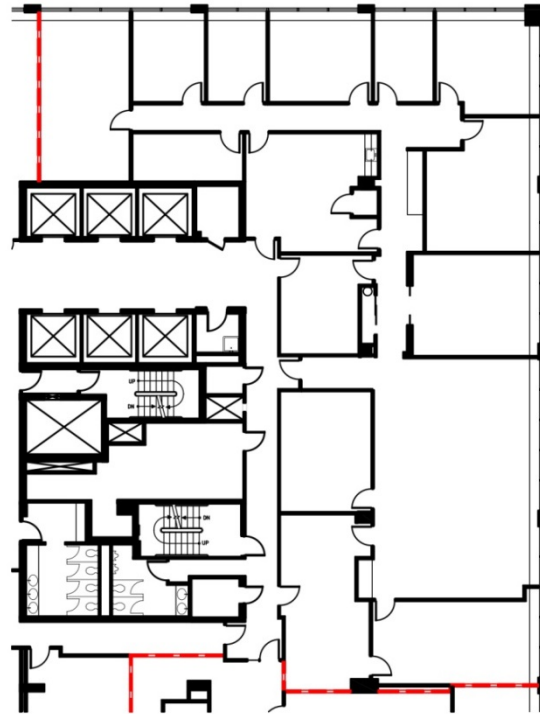


# ONE GATEWAY



## SUITE 2400

7,052 RSF



24<sup>th</sup> Floor Key Plan  
(occupied)



COLLIERS INTERNATIONAL  
300 Interpace Parkway | Bldg. C, 3rd Floor  
Parsippany, NJ 07054  
[www.colliers.com](http://www.colliers.com)

**Bryn Cinque**  
+1 973 299 3016  
[Bryn.Cinque@colliers.com](mailto:Bryn.Cinque@colliers.com)

**James Bailey**  
+1 973 299 3013  
[James.Bailey@colliers.com](mailto:James.Bailey@colliers.com)

Managed by  
**ADVANCE**  
REALTY