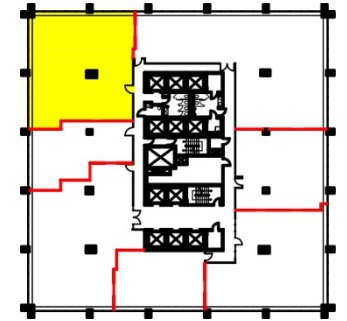
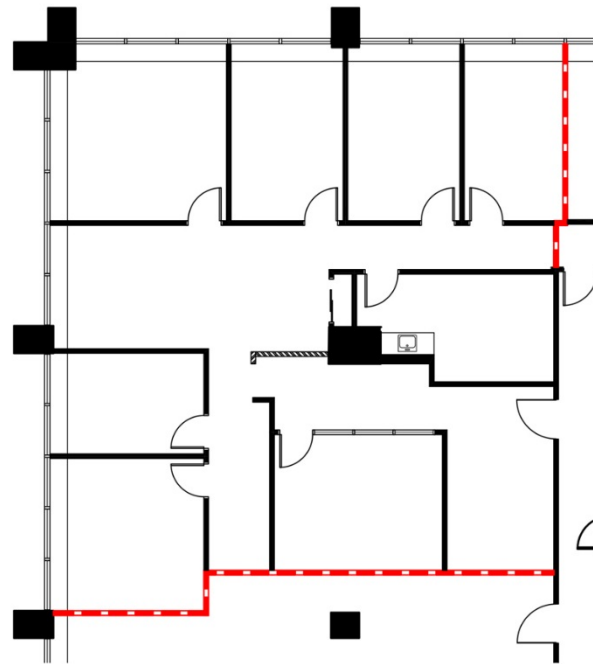


ONE GATEWAY

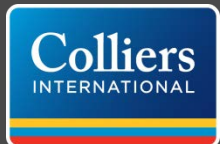


SUITE 910

3,052 RSF



9th Floor Key Plan



COLLIERS INTERNATIONAL
300 Interpace Parkway | Bldg. C, 3rd Floor
Parsippany, NJ 07054
www.colliers.com

Bryn Cinque
+1 973 299 3016
Bryn.Cinque@colliers.com

James Bailey
+1 973 299 3013
James.Bailey@colliers.com

Managed by
ADVANCE
REALTY